




B	VVA	JSC	DFE	10/02/2021	TEL QUE CONSTRUIT / AS BUILT	TQC
A	AGI	JSC	DFE	18/11/2020	PREMIERE VERSION / FIRST VERSION	PRE
REV	ETABLI <b>ESTABLISHED</b>	VERIFIE <b>CHECKED</b>	APPROUVE <b>APPROVED</b>	DATE	DESIGNATION	STAT.

--	--

<b>CONTRACTANT / CONTRACTOR :</b> 	<b>CLIENT / CUSTOMER :</b> 
--	--

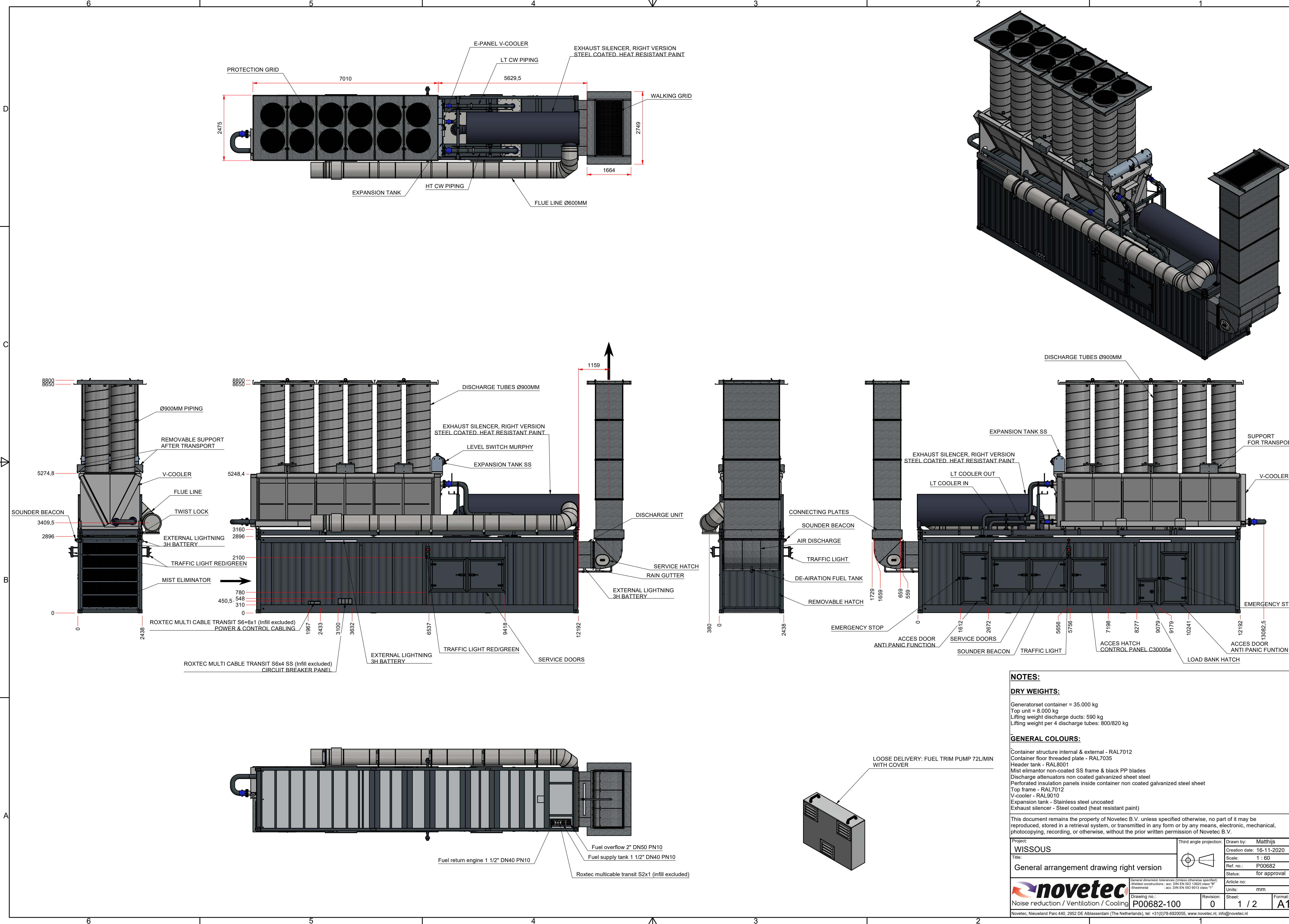
<b>PROJET / PROJECT :</b>  <b>CYRUS ONE / WISSOUS</b> <b>5x 3000 kVA + 1x 900 kVA</b>
--

<b>IDENTIFICATION DOCUMENT / DOCUMENT IDENTIFICATION :</b>  <b>GLOBAL ARRANGEMENT DRAWING</b> <b>C3000D5e - DATAHALL</b>
---

<b>ECHELLE : SCALE :</b>	<b>1 : 1</b>	<b>Cyrus One Wissous</b>		
<b>FORMAT : SIZE :</b>	<b>A4</b>			
<b>DESSINAT. : DESIGNER :</b>	<b>DFE</b>			
<b>FOLIO : FOLIO :</b>	<b>1/3</b>			
<b>STATUT : STATUT :</b>	<b>PRE</b>	<b>NUM. CONTRACTANT / CONTRACTOR NUMBER :</b> <b>GAD-19102403-00</b>	<b>NUMERO CLIENT / CUSTOMER NUMBER :</b> <b>N/A</b>	<b>REV.</b> <b>B</b>

Ce document est la propriété de CUMMINS France et ne doit pas être diffusé ou copié sans son accord écrit. CUMMINS France se réserve le droit de modifier le plan sans préavis.  
This document is the exclusive property of CUMMINS France and shall not be used, copied or communicated to third parties without their prior authorization.





**NOTES:**

**DRY WEIGHTS:**

Generatorset container = 35.000 kg  
Top unit = 8.000 kg  
Lifting weight discharge ducts: 590 kg  
Lifting weight per 4 discharge tubes: 800/820 kg

**GENERAL COLOURS:**

Container structure internal & external - RAL7012  
Container floor threaded plate - RAL7035  
Header tank - RAL8001  
Mist eliminator non-coated SS frame & black PP blades  
Discharge attenuators non coated galvanized sheet steel  
Perforated insulation panels inside container non coated galvanized steel sheet  
Top frame - RAL7012  
V-cooler - RAL9010  
Expansion tank - Stainless steel uncoated  
Exhaust silencer - Steel coated (heat resistant paint)

This document remains the property of Novetec B.V. unless specified otherwise, no part of it may be reproduced, stored in a retrieval system, or transmitted in any form or by any means, electronic, mechanical, photocopying, recording, or otherwise, without the prior written permission of Novetec B.V.

Project: <b>WISSOUS</b>	Third angle projection: 	Drawn by: <b>Matthijs</b>
Title: <b>General arrangement drawing right version</b>		Creation date: <b>16-11-2020</b>
		Scale: <b>1 : 60</b>
		Ref. no.: <b>P00682</b>
		Status: <b>for approval</b>
		Article no:
		Units: <b>mm</b>
		Sheet: <b>1 / 2</b>
		Format: <b>A1</b>

**novetec**  
Noise reduction / Ventilation / Cooling

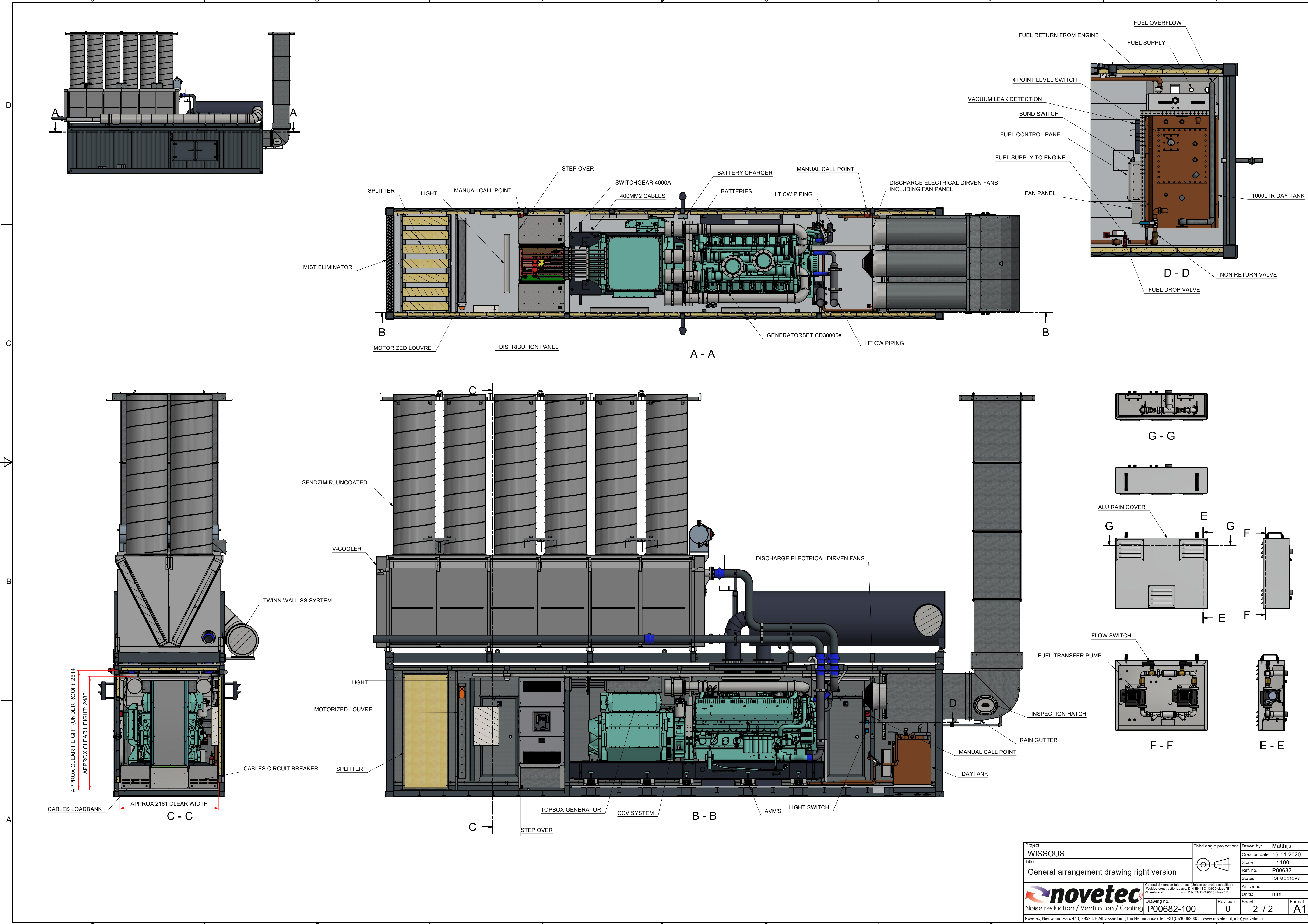
General dimension tolerances (Unless otherwise specified)  
Sheetmetal : acc. DIN EN ISO 1302 class "B"  
Sheetmetal : acc. DIN EN ISO 9013 class "1"

Drawing no.: **P00682-100**

Revision: **0**

Novetec, Nieuwland Parc 440, 2952 DE Alblasserdam (The Netherlands), tel: +31(0)78-6920055, www.novetec.nl, info@novetec.nl





Project: <b>WISSOUS</b>	Third angle projection: 	Drawn by: Matthijs
Title: <b>General arrangement drawing right version</b>		Creation date: 16-11-2020
		Scale: 1 : 100
		Ref. no.: P00682
		Status: for approval
		Article no:
		Units: mm
		Sheet: 2 / 2
		Format: A1
Drawing no.: <b>P00682-100</b>		
Revision: <b>0</b>		
Novotec, Nieuwland Parc 440, 2952 DE Alblasserdam (The Netherlands), tel: +31(0)78-6920055, www.novotec.nl, info@novotec.nl		